

NEWARK ENROLLS

A CHOICE FOR ALL STUDENTS

2025-2026 ENROLLMENT PROCESS

A GUIDEBOOK FOR FAMILIES AND STUDENTS APPLYING TO PUBLIC SCHOOLS IN NEWARK



Sherlyn Murudumbay, 6th Grade
"The Clothesline"
Fourteenth Avenue School

LETTER FROM THE SUPERINTENDENT

Dear Newark Families,

I am excited to share the tenth annual edition of the Newark Enrolls school guidebook with you. For each of the schools, you will find a one-page profile that provides important information about the schools in our unified enrollment system process. We are excited to continue our partnership with SchoolMint, our online platform which has simplified the online application. While the overall process remains the same, we have taken advantage of enhanced mobile features, an interactive school finder, and a streamlined online registration process. As our partnership with SchoolMint continues, we will introduce even more features.

This year's guidebook includes:

- A full page of family-friendly information for every participating PK-12 school
- Details about sports, clubs, community partnerships, and before and after school opportunities
- Robust academic performance data (e.g., NJSLA scores; high school graduation rates, etc.)

We hope that this guidebook will help you choose schools that will provide the best education possible for your children and set them on a path to success.

In addition, over the last few years, we have collected feedback from families, students, educators, and community leaders about how to make the enrollment process better and ensure that it works for you. We have taken that feedback into consideration and have made the following improvements:

- Updated the online application for fast, easy completion for families
- Improved sibling matching to ensure siblings are placed in the same school, whenever possible
- Increased priority for geographic preference to ensure that all children (from within the neighborhood) have access to neighborhood schools first, before students from outside the neighborhood
- Expanded phone and in-person support where preferred

Families interested in participating in the enrollment process should visit www.newarkenrolls.org to:

- Attend the School Fair on November 2, 2024
- Learn about school options through the new School Finder system
- View a calendar of virtual open houses and enrollment events taking place at schools throughout the city
- Submit an application for their children

Please remember that if you are happy with your child's current school and their next grade and/or program is available at that school, you do not need to complete the application process. Your child will automatically continue their enrollment at their current school.

The application process dates are:

- November 2, 2024 - Application Window Opens at 3:00 pm
- February 7, 2025 - Application Window Closes at 11:59 pm
- February 14 & 21, 2025 - Admissions Test for NBOE 8th graders
- February 15 & 22, 2025 - Admissions Test for Non-NBOE 8th graders

We thank you for your partnership, and look forward to supporting you and your children as you consider the incredible school options for the 2025-2026 school year.

Sincerely,



Roger León
Superintendent
Newark Board of Education

GUIDEBOOK USE - CHOOSING A SCHOOL

Welcome to the Newark Enrolls Guidebook!

This guidebook is intended to provide information to help you make a school choice for your child(ren) in the city of Newark through the Newark Enrolls Universal Enrollment application process. Given the number of participating schools across the city, families are given the opportunity to choose the right school for their child(ren) at almost every school in Newark.

How to begin choosing a school?

This guidebook is a great place to start! Consider some of these points:

<p>What does your child enjoy most about school?</p> <p>What experience do you want your child to have at school?</p>	<ul style="list-style-type: none">• Newark offers a variety of school options. This guidebook is designed to give you an overview of the academic rigor and extracurricular opportunities that each school offers. Each school has a profile filled with information.• This book includes public schools (operated by the Newark Board of Education) and many, but not all, charter schools (operated by independent organizations, yet adhering to the same educational requirements as district schools). Some charter schools do not participate in the Newark Enrolls Universal Enrollment application process, so they are not included in this guidebook.
<p>Does your child have any special considerations?</p>	<ul style="list-style-type: none">• Find information regarding special education and physical accessibility on page 15.• Find information regarding bilingual/ESL programs on page 10.• Find information on private pre-k providers along with NBOE providers (both offer the same curriculum for pre-kindergarten children) at www.newarkenrolls.org.
<p>Practical information: Where is the school? How long is the commute? Are before-school or afterschool programs available?</p>	<p>Find all of that information on each school profile, on the top and on the right side of the page. Visit our School Finder at: www.newarkenrolls.org</p>
<p>Visit the school!</p>	<p>A school visit is always an option for you. Making a school choice can (and should) include more information than this book contains. Talking with staff and seeing the school can be extremely informative, and is encouraged. Please call the school to schedule a school visit. Phone numbers for schools are included on each school's profile page in this guidebook.</p>
<p>Narrow down to a list of 8 top choices and submit an application via www.newarkenrolls.org</p>	<p>In order to submit your application, for the 2025-2026 school year, verify this information:</p> <ul style="list-style-type: none">• Does the school participate in Newark Enrolls? (All NBOE schools and some charter schools do.) Non-participating charter schools will require separate applications. Please contact the school directly.• The application window for next school year is November 2, 2024 - February 7, 2025.

FREQUENTLY ASKED QUESTIONS ABOUT THE NEWARK ENROLLS PROCESS

Visit www.newarkenrolls.org for the most up to date information on the application, frequently asked questions, and matching policies.

1. Will my student receive their first choice?

- The only reason a Newark student would not get into his or her first choice would be if the school does not have enough seats for all applicants.
- When a student does not receive his or her first choice, the matching process will move down the student's list of schools in order to place the student in his or her highest-ranked school with available seats.

2. How many families get into their top choice?

- Last year, 84.7% of all Newark students were matched to their top 3 choices.
- Last year, 82.5% of 9th graders were matched to one of their top 3 choices.

3. Can my student be matched to a school that isn't listed on his/her application?

- In rare cases, if a student needs a new school and only lists one or two schools, the student may be matched to their neighborhood school if the number of applicants exceeds the number of seats at their ranked schools.*
- Applicants are never matched to a charter school unless they list it on their application.

4. I would like my children to attend the same school as their sibling. What should I do?

- With the exception of magnets and some specialized schools, applicants who have a sibling currently attending the school receives the highest priority at the school.
- Siblings who are applying at the same time receive priority to be matched together. If one of the students is matched to a school, his/her sibling(s) will be given preference to be matched to the same school.

5. How does the neighborhood preference work?

- Seats in these schools are prioritized for siblings first. All remaining seats are prioritized for students who live within the neighborhood.

6. How does the magnet and specialized schools matching process work?

- District magnet and specialized schools have admission criteria. These schools rank all applicants using different criteria including standardized test scores, grades, and attendance. Some may also require an audition or an interview.
- All students can apply for admission into a magnet school.
- Sibling priority does not apply to magnet schools.
- ***Please review the magnet criteria information listed on the school's information page and website.***

NBOE Magnet High Schools	
American History High School Arts High School Bard Early College High School	Science Park High School Technology High School University High School
NBOE Specialized High Schools	
Eagle Academy for Young Men Newark School of Data Science & Information Technology Newark School of Fashion & Design	Newark School of Global Studies Newark Vocational High School

****Please make sure you have your children under one SchoolMint account.***

Stage 1

NOVEMBER 2 - FEBRUARY 7

Who should fill out an application?

- Students who are enrolling in school for the first time.
- Students who are in the last grade of their current school and need a new school for next year.
- Students who need a change in their school for next year.

How will families learn about their match?

- Families can log into their SchoolMint account if they submitted an application online at www.newarkenrolls.org.
- Families can also learn about the status of their application at their current school.
- We will notify you via email or text message when matches are available.

Stage 2

MID APRIL

Stage 3

LATE APRIL - JUNE

School Registration/Enrollment

When you receive a match:

- You must register by completing the registration packet in SchoolMint.

TIPS FOR APPLYING

COMPLETE THE APPLICATION ONLINE

STEP 1: Visit the Newark Enrolls website:

- www.newarkenrolls.org

STEP 2: Verify that you have access to your School Mint account.

Need an account? Request one at www.newarkenrolls.org

STEP 3: Complete the application by the **February 7, 2025** deadline date.

If you need assistance please contact your child's current school.

TIPS FOR APPLYING



Submit your application during the application window before February 7!

- All families who apply during this period have an equal chance of being matched to schools.
- Families who apply after the application deadline will only have access to schools with remaining seats.



Rank your schools on the application in order of preference.

- **Put a mix of school types on your application.**
 - For High School students, make sure to include schools that match your child's interest.
 - All magnet schools rank students based on academic profile which includes grades, attendance, and test scores. In some cases, an audition, writing assessment, or interview may be required.



Check the commute for all schools on your list.

- **Make sure you have a transportation plan for each one, since you may be matched to any school on your application.**
 - Students in 8th grade or below, are eligible for New Jersey Transit bus tickets if they live more than **2 miles** from their school.
 - Students in 9th grade or above are eligible for New Jersey Transit bus tickets if they live more than **2.5 miles** from their school.

Visit www.newarkenrolls.org for the most up to date information on the application timeline, frequently asked questions, and resources.

DISTRICT DATA SUMMARY

STUDENT ENROLLMENT (2023-2024)

Grades	Enrollment	Percent of Total Enrollment
Pre-K	3,795	9.4%
K-8	24,655	61.3%
9-12	11,792	29.3%
Total Enrollment	40,242	100%

STUDENT RACE & ETHNICITY (2023-2024)

Race & Ethnicity	Enrollment	Percent of Total Enrollment
Hispanic	23,302	57.9%
Black or African American	13,663	34.0%
White	2,553	6.3%
Asian	305	<1%
Native Hawaiian Pacific Islander	97	<1%
American Indian or Alaska Native	173	<1%
Multiracial	149	<1%
Total Enrollment	40,242	100%

FAMILY INCOME (2023-2024)

Meal Subsidy Status	Enrollment	Percent of Total Enrollment
Free Lunch	26,987	67%
Reduced-Price Lunch	3,303	8%
Paid Lunch (income above the qualifying threshold)	9,952	25%
Total Enrollment	40,242	100.0%

ADDITIONAL DEMOGRAPHICS (2023-2024)

Disability Classification	Enrollment	Percent of Total Enrollment
Special Education	6,235	15%
Limited English Proficient	10,258	25%

*A number of students are designated as both in need of Special Education and English Language Learner services

ADDITIONAL STUDENT OUTCOMES (2023-2024)

Measure	
Average Daily Attendance	94.8%
Percent of Students who were Chronically Absent (missing 10% or more of school days)	12.1%
Four-year graduation rate	85.2%*

*Graduation rate is projected. Graduation appeals are still under review with the state.

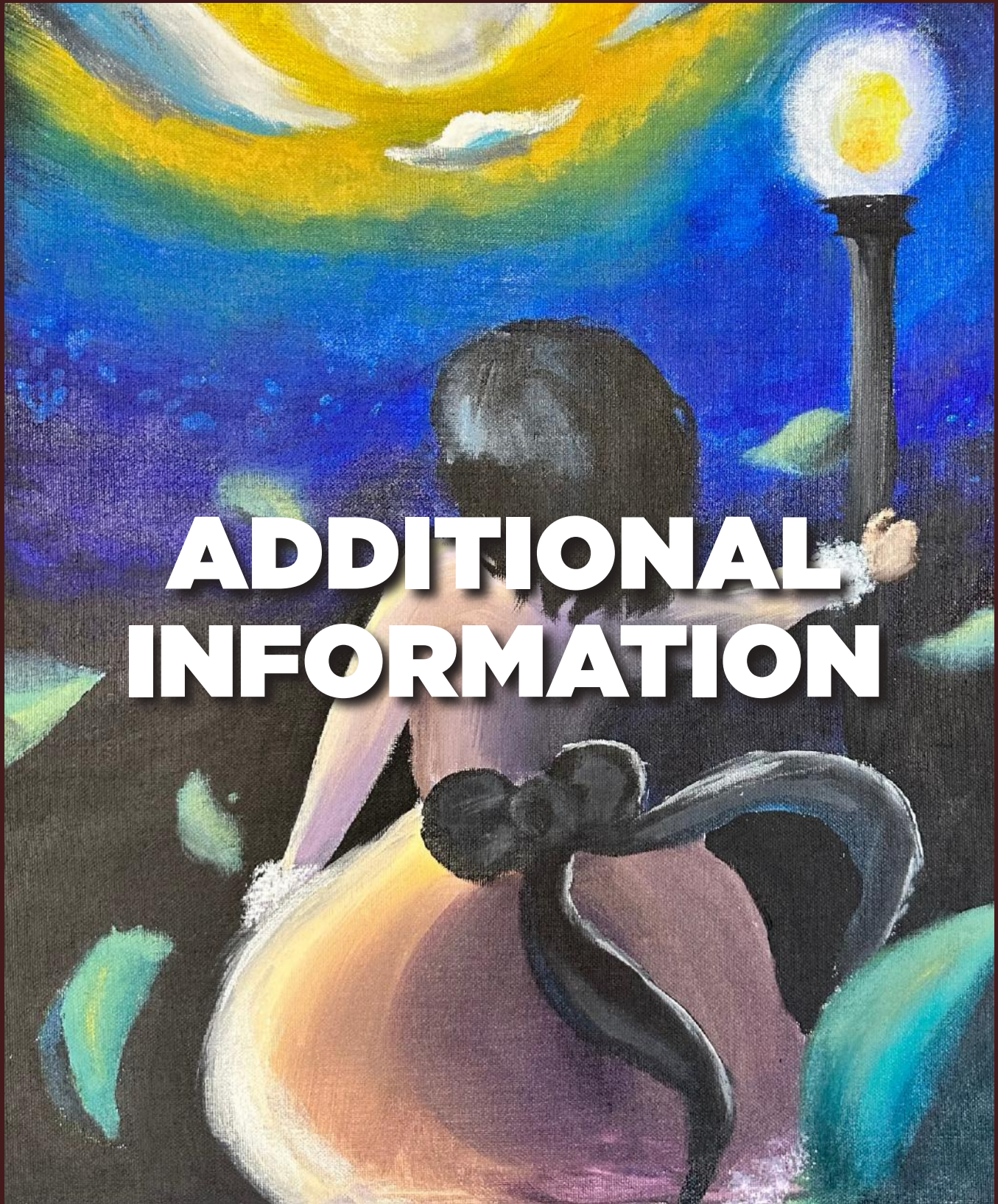
Source - NJSMART GradeLevelProfile Oct 2023

HOW TO READ THE SCHOOL PROFILE PAGES

TITLE	INFORMATION	
Seat Availability	Entry Grade	Grade level where the school admits most of its students and/or grade where the school starts.
	Total Number of Seats in Entry Grade	The number of seats available in the entry grade this year.
	Percentage of applicants who listed this school first and were matched to this school	The percent of students who ranked the school #1 on their application and who were matched to the school. For example, if the number is 75%, it means that only 75% of students who ranked the school #1 were matched to the school.
Additional School Data	Average Daily Attendance	For district schools, the average daily attendance was calculated by adding all of the total present days of attendance for all students divided by the total days enrolled for all students. For charter schools this information was self-reported.
	Percentage of Students Chronically Absent	Percent of students who are “chronically absent” for any reason, e.g., excused, unexcused, etc. during the 2023-2024 School year. “Chronically absent” is defined as missing 10% or more of the days the student is enrolled. For charter schools this information is self reported.
Percentage of Students who scored proficient and above on NJSLA	English Language Arts Mathematics	NJSLA: New Jersey requires students to take the NJSLA assessments. These test are designed to determine proficiency level - a measure that determines if a student has mastered the state standards for knowledge and skills for their current grade level. The percentage reflects the proportion of students who scored “proficient” or above on the 2023-2024 NJSLA exam.
Average Section Size		For high school grades the average section size is calculated based on the number of students in typical sections, excluding self-contained, lunch, and online sections. Sections taught by the same teacher at the same time were summed together.
Access to Technology	Number of Chromebooks per school	Calculated from internal district records of technology assets.
Graduation Rates	4-Year Graduation Rate	The percentage of students at the school who entered 9th grade four years earlier (in Fall 2020) and graduated in 2024. This cohort also includes transfers into the school and excludes students who were verified as transferring out. For charter schools this information is self reported.
Postsecondary Enrollment Rates	Total Percent Enrolled	This represents the percentage of high school graduates who enrolled in a post-secondary institution. The available data is from the New Jersey Department of Education 2023-2024 Performance Reports. The most recently available data is based on the cohort of graduates 16-months prior (i.e. 2023-24 data is based on the 2023 cohort of graduates).
	Percent Enrolled in a 2-Year College	This represents the percentage of high school graduates who enrolled in a two-year post-secondary program out of all of the students who enrolled in a post-secondary program of any kind.
	Percent Enrolled in a 4-Year College	This represents the percentage of high school graduates who enrolled in a four-year post-secondary program out of all of the students who enrolled in a post-secondary program of any kind.
Teacher Data	Percent of Teachers employed with NBOE for 5+ years	The percent of teachers with five or more years of experience as of the end of the 2023-24 school year. This indicator excludes experience gained outside of NPS. Positions include all instructional staff (i.e., all those evaluated on the Framework for Effective Teaching) at school sites. Instructional staff includes all subject teachers and academic interventionists. This indicator excludes administrators.
	Percent of Highly Effective and Effective teachers retained from 2023-24 to 2024-25	The percent of teachers from the previous academic year (2023-24) still employed as teachers at the same school this academic year (2024-25) who received effective or highly effective evaluation ratings. These indicators describe within-school retention and not retention in the district.
	Student-Teacher Ratio	The ratio of student enrollment to certified teachers. Students were defined as those actively enrolled during the 2024-25 school year. Teachers were defined as those employees, as of June, 2024, with teacher certifications and includes Academic Interventionist and Teachers.
	Percent of Teachers with advanced degrees	Percent of teachers at each school whose highest level of education is either a Masters or Doctoral Degree. This data is from the 2022-23 NJDOE performance reports.

CITATIONS

- I. NBOE’s Data, Research, and Evaluation homepage: <http://www.nps.k12.nj.us/departments/data-research>
- II. New Jersey Department of Education School Performance Reports
- III. Data self reported by charter school



Artwork by: Jacelyn Gonzalez, Grade11, "Midnight Chorus" - Arts High School

IDENTIFICATION PROCESS FOR ENGLISH LANGUAGE LEARNERS

In order to properly identify and support English language learners, the New Jersey Department of Education has developed an identification process which all districts must follow.

All parents/guardians complete a Home Language Survey (also known as the HLS) located in the SchoolMint application. The HLS assists in identifying if a student is a potential English language learner. The HLS is reviewed by the school's Bilingual Needs Assessment Teacher (BNAT).



Once a student is identified as a potential English Language Learner, the BNAT will conduct a review of the student's records during the Records Review Process.



If the Records Review Process continues to note that the student is a potential English Language Learner, the student will be assessed using the WIDA Screener. The WIDA Screener specifically assesses students' English language proficiency level.



Parents/guardians of students who are assessed using the WIDA Screener will be notified of student scores, and eligibility for English language services by the school's BNAT, will receive program information from the school's BNAT and services will be offered.

PROGRAM DESCRIPTIONS

In accordance with New Jersey Bilingual Education Administration Code, the Newark Board of Education provides the following bilingual programs to English Language Learners with the goal of supporting linguistic and academic achievement in more than one language.

Types of Programs

Transitional Bilingual Education

A transitional Bilingual Education Program provides instruction for English language learners utilizing English and students' native language for literacy and academic instruction, with the goals of language proficiency and academic achievement in English.

These programs are typically found in kindergarten through grade twelve.

Transitional Bilingual - Full Time

- Instruction in speaking, listening, reading, and writing in the native language of the English Language Learner in core subjects.
- Helps students achieve proficiency in English, as well as content knowledge to meet the New Jersey Student Learning Standards.
- At least 1 daily period of English as a Second Language (ESL) instruction.

Transitional Bilingual - Part Time

- A program alternative in which students are assigned to mainstream English program classes, but are scheduled daily for their developmental reading and mathematics instruction with a certified bilingual teacher.
- Students also receive at least 1 daily period of English as a Second Language (ESL) instruction.

English as a Second Language

- A daily developmental second-language program of at least one period of instruction that teaches comprehension, speaking, reading, and writing in English using second language teaching techniques, and incorporates the cultural aspects of the students' experiences in their ESL instruction.

English as a Second Language, High Intensity

- A program alternative in which students receive two or more class periods a day of ESL instruction. One period is the standard ESL class, and the other period is a tutorial or ESL reading class.

Sheltered Instruction

- A program alternative in which students receive one daily period of standard English as a Second Language.
- Teachers in Sheltered Instruction classrooms are content-certified teachers who have received training on strategies to make subject-area content rigorous, culturally relevant, and comprehensible for English Language Learners.

BILINGUAL/ESL EDUCATION PROGRAMS

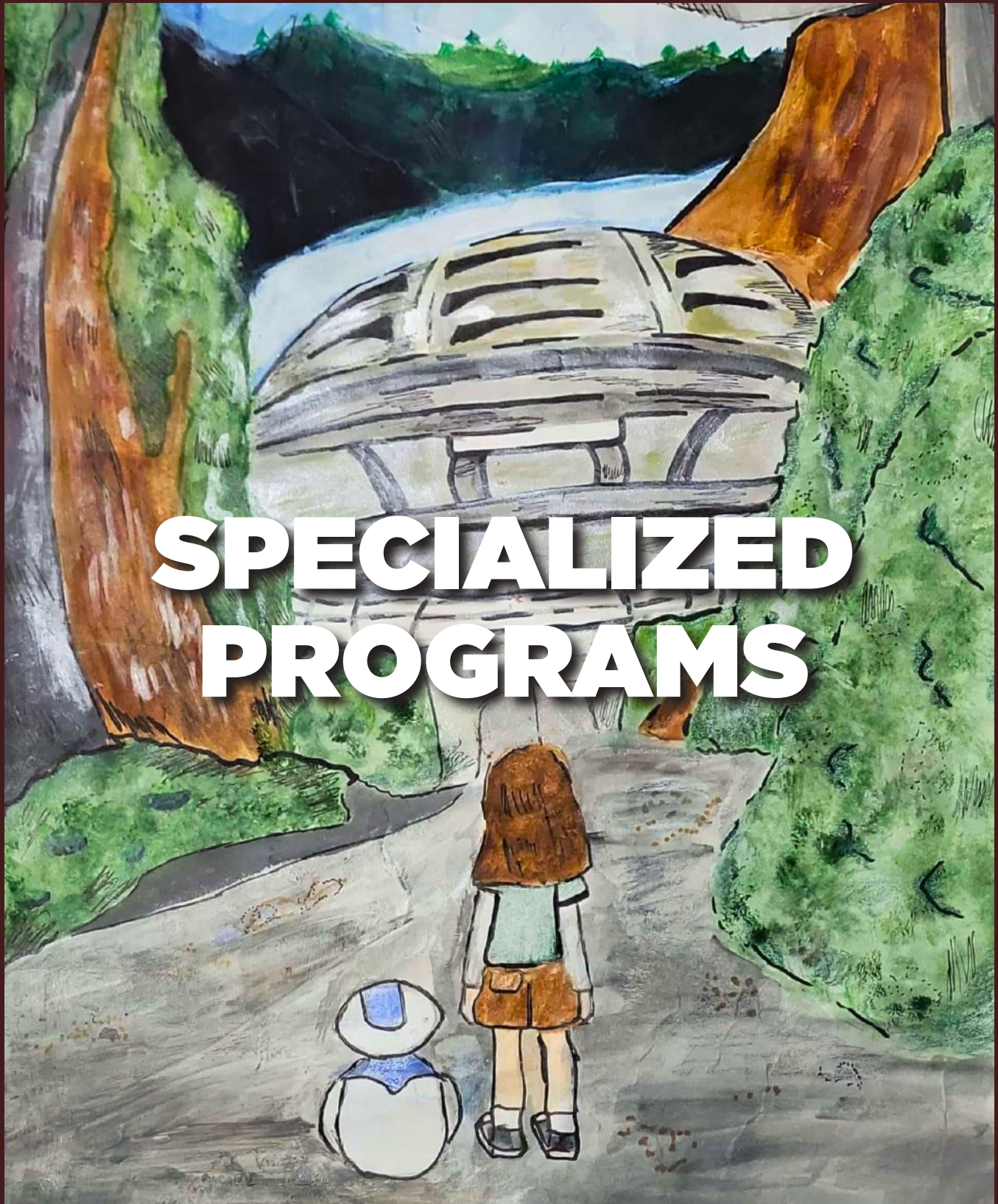
Please note that these are subject to change for the 2025-2026 school year. Please visit www.newarkenrolls.org for the latest information about program availability.

SCHOOL CODE	SCHOOL NAME	SPANISH	PORTUGUESE	FRENCH	HAITIAN CREOLE	HIGH INTENSITY ESL	SHELTERED INSTRUCTION
CENTRAL WARD							
060	Camden Street Elementary School						K-8
117	Nelson Mandela Elementary School	K-5 (Full Time)				K-5	
089	Quitman Street Elementary School						K-8
EAST WARD							
049	Ann Street Elementary School	K-8 (Full Time)	K-8 (Full Time)			K-8	
115	East Ward Elementary School	K-8 (Full Time)	K-8 (Full Time)			K-8	
075	Hawkins Street Elementary School	K-8 (Full Time)	K-8 (Full Time)			K-8	
112	Ironbound Academy Elementary School	K-7 (Full Time)				K-7	
077	Lafayette Street Elementary School	K-8 (Full Time)	K-8 (Full Time)			K-8	
087	Oliver Street Elementary School	K-8 (Full Time)	K-8 (Full Time)			K-8	
093	South Street Elementary School	K-8 (Full Time)	K-8 (Full Time)			K-8	
105	Wilson Avenue Elementary School	K-8 (Full Time)	K-8 (Full Time)			K-8	
NORTH WARD							
046	Abington Avenue Elementary School	K-8 (Full Time)				K-8	
074	Dr. E. Alma Flagg Elementary School	K-8 (Full Time)				K-8	
073	Dr. William H. Horton Elementary School	K-8 (Full Time)				K-8	
068	Elliott Street Elementary School	K-8 (Full Time)				K-8	
070	First Avenue Elementary School	K-8 (Full Time)				K-8	
072	Franklin Elementary School	K-8 (Full Time)				K-8	
057	Luis Muñoz Marin Elementary School	K-8 (Full Time)				K-8	
081	McKinley Elementary School	K-3 (Full Time)				K-8	
050	Park Elementary School	K-8 (Full Time)				K-8	
095	Rafael Hernández Elementary School	K-3 (Full Time)				K-8	
090	Ridge Street Elementary School	K-8 (Full Time)				K-8	
099	Roberto Clemente Elementary School	K-8 (Full Time)				K-8	
014	Salomé Ureña Elementary School	K-8 (Part Time)				K-8	
101	Sussex Avenue Elementary School	K-8 (Full Time)				K-8	
SOUTH WARD							
163	George Washington Carver Elementary School	K-8 (Full Time)					K-8
145	Louise A. Spencer Elementary School	K-8 (Full Time)				K-8	
088	Peshine Avenue School	K-8 (Full Time)					K-8
159	Thirteenth Avenue Elementary School	K-8 (Full Time)					K-8

BILINGUAL/ESL EDUCATION PROGRAMS

Please note that these are subject to change for the 2025-2026 school year. Please visit www.newarkenrolls.org for the latest information about program availability.

SCHOOL CODE	SCHOOL NAME	SPANISH	PORTUGUESE	FRENCH	HAITIAN CREOLE	HIGH INTENSITY ESL	SHELTERED INSTRUCTION
WEST WARD							
110	Ivy Hill Elementary School				K-8 (Part Time)	K-8	
085	Mount Vernon Elementary School	K-8 (Full Time)				K-8	
HIGH SCHOOL							
043	American History High School						9-12
026	Arts High School					9-12	
011	Bard High School Early College						9-12
027	Barringer High School	9-12 (Full Time)				9-12	
028	Central High School	9-12 (Full Time)		9-12 (Full Time)		9-12	
040	Eagle Academy for Young Men of Newark						9-12
030	East Side High School	9-12 (Full Time)	9-12 (Full Time)			9-12	
031	Malcolm X Shabazz High School	9-11 (Full Time)				9-12	
010	Newark School of Data Science & Information Technology					9-12	
013	Newark School of Fashion & Design						9-12
020	Newark School of Global Studies						9-12
041	Newark Vocational High School					9-12	
025	Science Park High School						9-12
038	Technology High School						9-12
024	University High School						9-12
033	Weequahic High School						9-12
034	West Side High School						9-12
SPECIALIZED SCHOOLS							
058	Bruce Street School for the Deaf						K-8
107	John F. Kennedy School						9-12
600	NJ Regional Day School						9-12



SPECIALIZED PROGRAMS

Artwork by: Dayana Santos, Grade 7, "Harmony" - Abington Avenue School

SPECIAL EDUCATION PROGRAMS

Newark Board of Education 2025-2026 K-8 Special Education Self-Contained Program Offerings

*Indicates Specialized School.

To learn more about our Specialized Schools – Bruce Street, 14th Avenue, John F. Kennedy and NJ Regional Day – please see visit: newarkenrolls.org/guidebook

GRADE LEVEL	AUDITORY IMPAIRMENT	AUTISM	BEHAVIOR DISABILITIES	COGNITIVELY IMPAIRED MILD	COGNITIVELY IMPAIRED MODERATE	LEARNING DISABLED MILD/MODERATE	LEARNING DISABLED SEVERE	MULTIPLE DISABILITIES	MULTIPLE DISABILITY MEDICALLY INVOLVED	
Please note that ALL families may apply to ANY charter school in Newark. All charter schools are required to serve any student who is matched to them, including students who need special education.										
K	Bruce Street*									
1										
2		Branch Brook								
3		Camden Street								
4		Elliott 1st-3rd grade					Abington 3rd-8th (SPAN)			
5		First Avenue					Chancellor Avenue	Dr. E. Alma Flagg 1st-8th grade	Fourteenth Avenue	
		George W. Carver					Dr. William H. Horton	East Ward Elementary K-7th grade	JFK*	
		Ivy Hill	Luis Muñoz Marín K-8th grade				Franklin 1st-8th grade	Grover Cleveland	Louise A. Spencer	Belmont Runyon
6		Louise A. Spencer	Peshine Avenue 1st-8th grade		Avon Avenue	14th Avenue*	George W. Carver	Harriet Tubman 6th-8th grade	NJ Regional Day*	Park Elem.
	Luis Muñoz Marín	South 17th Street 2nd-8th grade				Lincoln 7th-8th grade	Hawthorne Avenue	Rafael Hernandez		
7	McKinley					Roberto Clemente	Mount Vernon 5th-8th grade	13th Avenue 5th-8th grade		
8	Quitman Street					Speedway				
	Salomé Ureña					13th Avenue 5th-6th grade				
		South Street								
		13th Avenue								
		14th Avenue*								

GRADE LEVEL	AUDITORY IMPAIRMENT	AUTISM	BEHAVIOR DISABILITIES	COGNITIVELY IMPAIRED MILD	LEARNING DISABLED MILD/MODERATE	LEARNING DISABLED SEVERE	MULTIPLE DISABILITIES	MULTIPLE DISABILITY MEDICALLY INVOLVED
-------------	---------------------	--------	-----------------------	---------------------------	---------------------------------	--------------------------	-----------------------	--

Please note that **ALL** families may apply to **ANY** charter school in Newark. All charter schools are required to serve any student who is matched to them, including students who need special education.

9	Technology High School								
10		American History High School 12th grade				Barringer High School	Barringer High School		
11		Central High School	Barringer High School		Weequahic High School	Eagle Academy		East Side High School	
		JFK*	Malcolm X Shabazz High School			East Side High School	Central High School	JFK*	JFK*
12					Weequahic High School	West Side High School	NJ Regional Day*		
					West Side High School				

Note that all Newark Board of Education high schools, including magnet schools, will have RCI and/or RCO programs. To learn more about RCO and RCI programs, please visit: newarkenrolls.org

IMPORTANT TERMS

DISTRICT SCHOOLS: Are schools that are managed by Newark Board of Education. They are located throughout Newark and serve all grades.

CHARTER SCHOOLS: Charter schools are operated by their own Local Education Agency (LEA). Charter schools are also public schools that are free of charge and are open to all students living in Newark. Charter schools are located throughout Newark and serve all grades.

MAGNET AND SPECIALIZED SCHOOLS: Magnet and specialized schools are district schools that offer specialized programs in grades 7-12 or 9-12. Any student can apply to attend a magnet or specialized school. Magnet and specialized schools consider academic and other criteria to rank students.

HEAD START: A school with Head Start offers an enhanced family oriented preschool program that offers nutrition, education, health and support services including individualized services, health and dental screening, family support, community resources and services to meet special needs.

- Proof of income is required for Head Start.

COMMUNITY BASED PROVIDER: Preschool providers are publicly-funded, privately managed schools for students eligible for Pre-K and offer comprehensive education, family and health referral services.

SIBLING PREFERENCE: Applicants who have siblings already matched to a school will have the highest priority to be matched to the school when there are seats available.

GEOGRAPHIC PREFERENCE: Students who apply to PK-8 schools in their geographic area will receive preference to be matched to those schools.

SPECIAL EDUCATION PREFERENCE: Students who have an Individualized Education Plan (IEP) and require special education services may receive a preference to be matched to a school of their choice that provide the services required by their IEP.

WAITLIST: Students who submit applications, but are not matched to schools through the application, are automatically added to a waitlist. **This only applies to charter school and district magnet and specialized school applicants.**

SCREENED: District magnet and specialized schools have additional criteria that students must meet to be considered.

	PRE-K (DISTRICT AND CHARTER)	DISTRICT ELEMENTARY AND MIDDLE SCHOOLS	CHARTER	DISTRICT HIGH SCHOOLS	DISTRICT MAGNET AND SPECIALIZED SCHOOLS
Sibling Preference	X	X	X	X	
Geographic Preference	X	X	X (does not apply to all participating charters)	X	
Special Education Preference	X	X	X	X	X
Screened					X
Waitlist	X		X		X

**NOW
ONLINE**



NEWARK COMMUNITY RESOURCES

Our directory includes organizations in the City of Newark and vicinity that provide services to families that support and promote the academic achievement of our students. We hope it can serve as a useful guide to families, NPS stakeholders and the Newark community.

ADULT EDUCATION & TRAINING

ACADEMIC ENRICHMENT

BEFORE & AFTER SCHOOL PROGRAM/SERVICES

CAREER & JOB DEVELOPMENT

CITY OF NEWARK SERVICES

COLLEGE & CAREER READINESS

FINANCIAL LITERACY & EDUCATION

HEALTH SERVICES

SOCIAL SERVICES

IMMUNIZATION INFORMATION & SERVICES

MENTAL HEALTH & COUNSELING SERVICES

MUSIC, ARTS & MEDIA

SPECIAL NEEDS SERVICES/PROGRAMS

SPORTS & RECREATION

TEEN PARENT SUPPORT SERVICES

WELLNESS, FITNESS & NUTRITION

YOUTH DEVELOPMENT

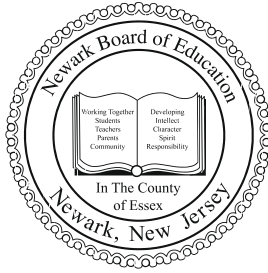
<https://newarkresources.org>

**Don't have access to a computer?
Call our Contact Center at 973-733-7333 for assistance.**

If you are a Community Organization and would like to join our directory, it's as simple as visiting our web site.



NEWARK BOARD OF EDUCATION AND ACKNOWLEDGMENTS



Hasani K. Council, President
Allison K. James-Frison, Vice President
Vereliz Santana, Vice President

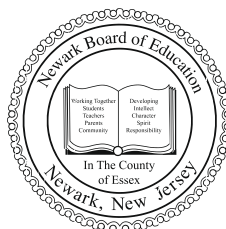
Kanileah Anderson
Josephine C. Garcia
Daniel Gonzalez
Dawn Haynes
Helena Vinhas
Crystal Williams

A SPECIAL THANKS TO

All of our Participating Schools

**NEWARK
ENROLLS**

Newark Board of Education



IMPORTANT CONTACT INFORMATION

For any issues, please check www.nps.k12.nj.us or www.newarkenrolls.org for the most up to date information.

FOR QUESTIONS ABOUT PRE-K AND HEAD START

LOCATION	ADDRESS	PHONE	EMAIL
Office of Early Childhood	765 Broad Street Newark, NJ 07102	973-733-6234	mjuliano@nps.k12.nj.us

FOR QUESTIONS ABOUT SPECIAL EDUCATION

LOCATION	ADDRESS	PHONE	EMAIL
Office of Special Education	765 Broad Street Newark, NJ 07102	973-733-7314	osemain@nps.k12.nj.us

FOR QUESTIONS ABOUT BILINGUAL EDUCATION

LOCATION	ADDRESS	PHONE	EMAIL
Office of Bilingual	765 Broad Street Newark, NJ 07102	973-688-2030 Ext. 8640	b1colon@nps.k12.nj.us

FOR QUESTIONS ABOUT HOMELESS/DISPLACED STUDENT SERVICES

LOCATION	ADDRESS	PHONE	EMAIL
Specialist for Homeless Management Student Support Services-Special Service Unit	765 Broad Street Newark, NJ 07102	862-810-8180 Ext. 8625	aლოსoria@nps.k12.nj.us

FOR GENERAL QUESTIONS

LOCATION	ADDRESS	PHONE
Newark Board of Education	765 Broad Street Newark, NJ 07102	973-733-7333

NEWARK ENROLLS

A CHOICE FOR ALL STUDENTS



Application Window Opens at 3:00 pm

November 2, 2024

Scan here for English



La ventana de solicitud se abre a las 3:00 pm

2 de noviembre de 2024

Escanea aquí para español



A janela do aplicativo abre às 3:00 pm

2 de novembro de 2024

Digitalize aqui para português



La fenêtre d'application s'ouvre à 15h00

2 novembre 2024

Scannez ici pour le français



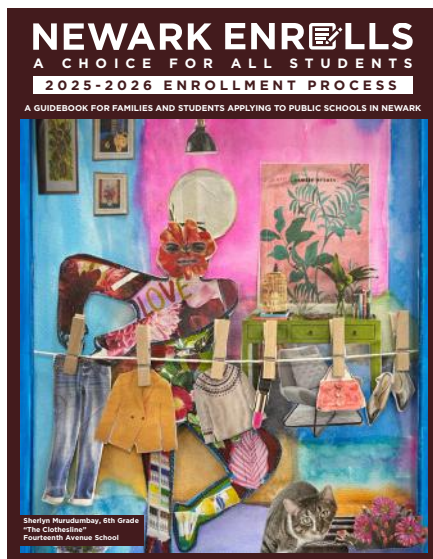
Fenèt aplikasyon an ouvè a 3:00 pm

2 Novanm 2024

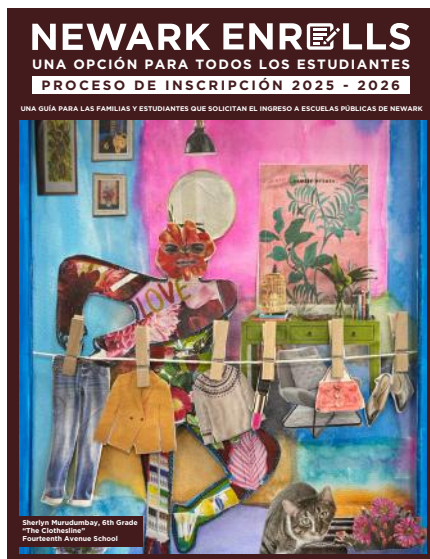
Eskane isit la pou kreyòl

NEWARK ENROLLS

A CHOICE FOR ALL STUDENTS



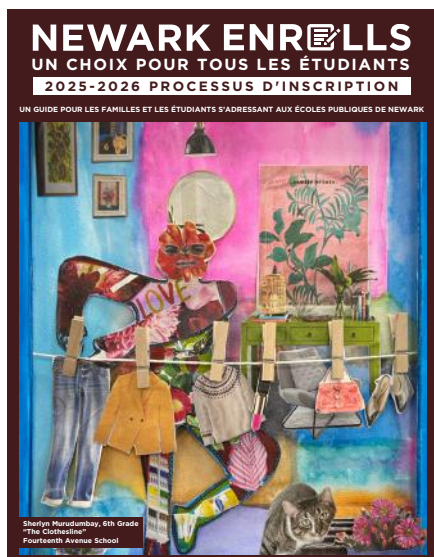
Newark Enrolls Guidebook



Guía de inscripción de Newark



Guia de matrículas de Newark



guide d'inscription pour Newark



gid enskripsyon pou newark



NEWARK ENROLLS

The information presented in this document was submitted and verified by schools and relevant NBOE departments. It is current as of the publication of this guidebook. Please visit www.newarkenrolls.org for the most current information.

WWW.NEWARKENROLLS.ORG